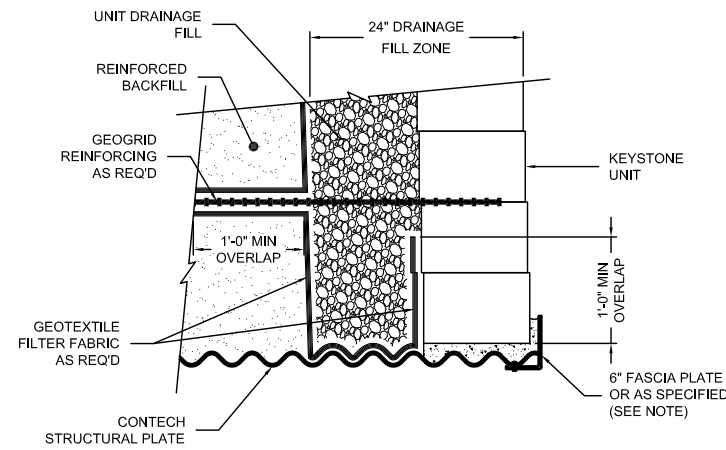
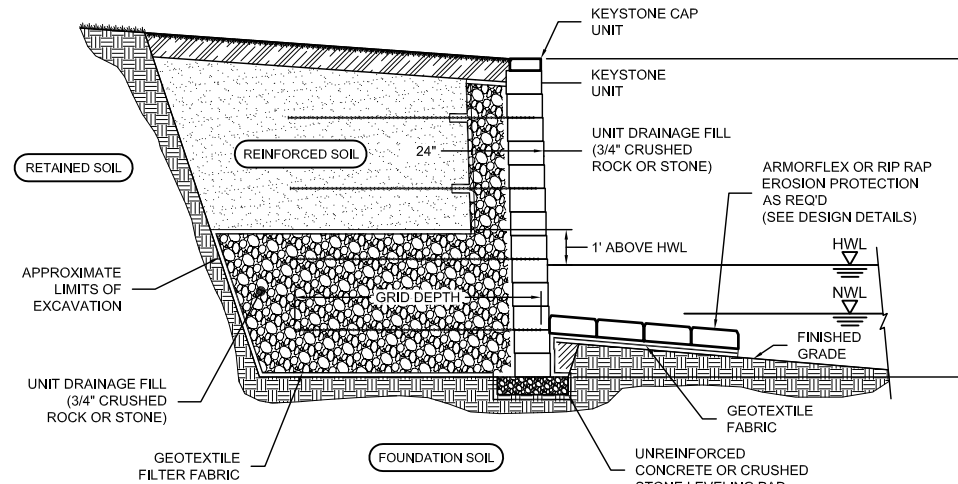


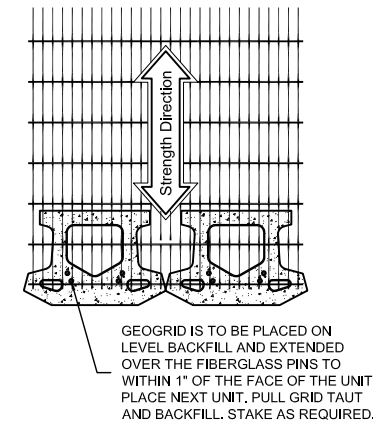
**SECTION A-A
CONNECTION JOINT PLAN**
NOT TO SCALE



**SECTION B-B
CONNECTION JOINT PLAN**
NOT TO SCALE



**SECTION C-C
TYP REINFORCED WALL SECTION IN WATER**
NOT TO SCALE

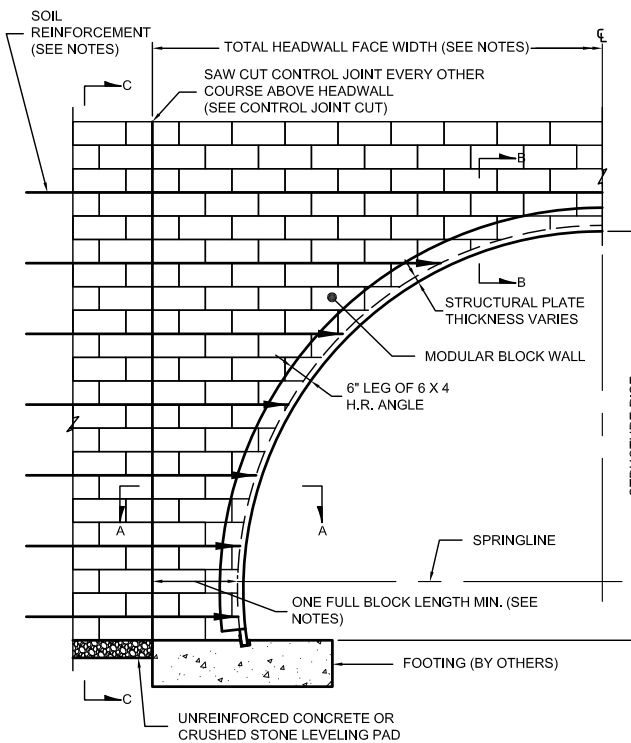


GRID & PIN CONNECTION
NOT TO SCALE

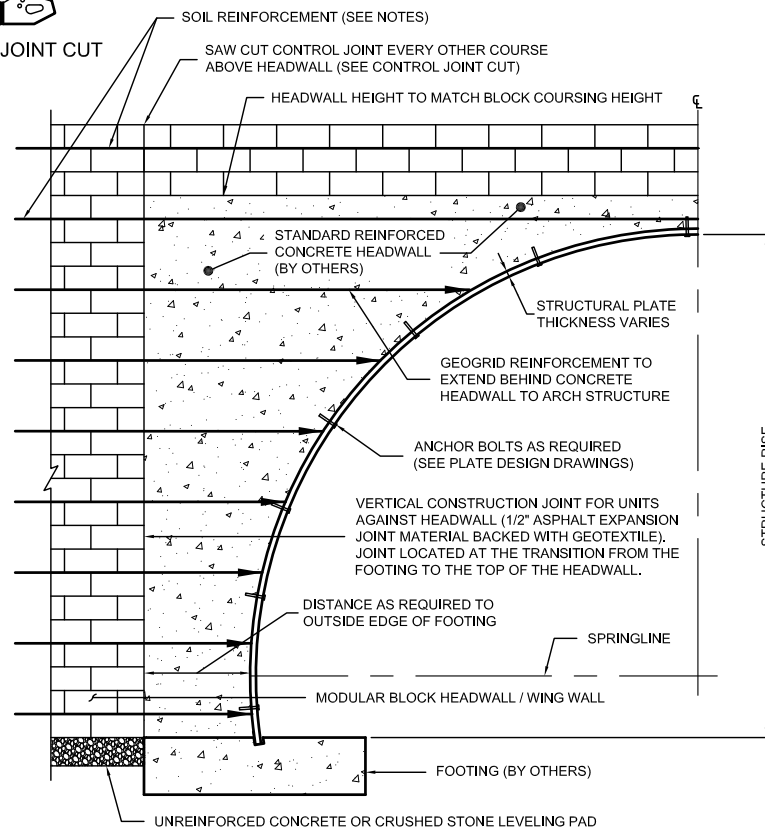
- NOTES:**
1. SOIL REINFORCEMENT PER SITE SPECIFIC DESIGN.
 2. FASCIA PLATE SHOWN IS 6" x 4" x 5/16" HOT ROLLED STEEL ANGLE (GALVANIZED FINISH) OR AS SPECIFIED.
 3. GROUT BETWEEN BLOCK AND PLATE USING NON-SHRINK TYPE GROUT CONFORMING TO ASTM C1107. TRIM BLOCKS TO LEAVE NO GAP WITH PLATE LARGER THAN 3/4".



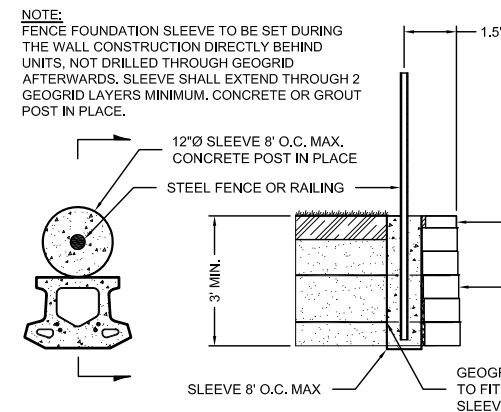
CONTROL JOINT CUT



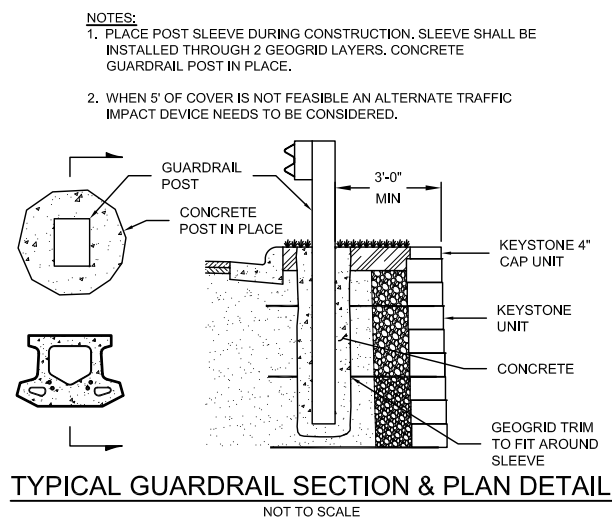
**PERPENDICULAR ALSP MODULAR
BLOCK HEADWALL DETAIL**
NOT TO SCALE



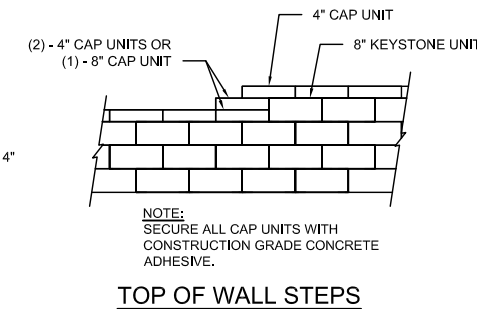
**SKEWED ANGLE ALSP MODULAR BLOCK/CONCRETE
HEADWALL DETAIL**
NOT TO SCALE



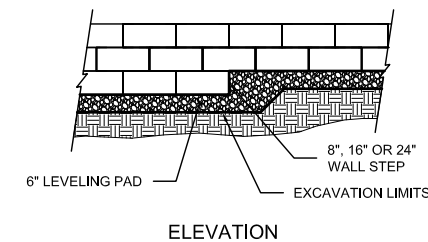
FENCE SECTION & PLAN DETAIL
NOT TO SCALE



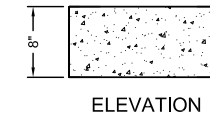
TYPICAL GUARDRAIL SECTION & PLAN DETAIL
NOT TO SCALE



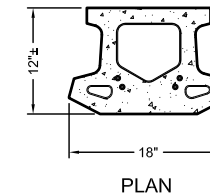
TOP OF WALL STEPS



LEVELING PAD DETAIL



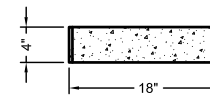
ELEVATION



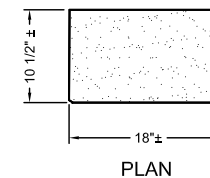
PLAN

**3 PLANE SPLIT
COMPAC III UNIT**

* DIMENSIONS & AVAILABILITY WILL VARY BY REGION
** ALTERNATE FACE STYLES AVAILABLE



ELEVATION



PLAN

**STRAIGHT SPLIT
CAP UNIT OPTION**

* DIMENSIONS & AVAILABILITY WILL VARY BY REGION

Copyright 2018 Keystone Retaining Wall Systems LLC

This document may contain proprietary information and shall not be duplicated in whole or in part, nor distributed to others without written consent of Keystone Retaining Wall Systems LLC.

The suitability and/or manner of use of any details contained in this document is sole responsibility of the user. Final project specific designs shall be prepared by a licensed professional engineer in the state of the project location.

No.	Date	Revision	By



4444 W 78th Street
Minneapolis, MN 55435
952-897-1040

Designed By:	Title:	Aluminum Structural Plate Details	Date:
Checked By:	Project:	Keystone Retaining Wall Systems Typical Headwall Details	Project No:
Scale:			Drawing No:
No Scale			